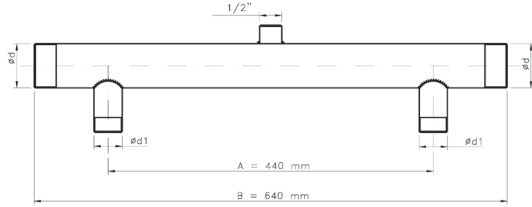


# ACCESSORIES AND SPARE PARTS

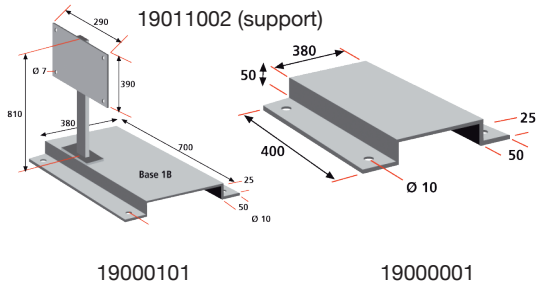
For a better identification, contact factory



## Collectors (galvanized)

Code	Ø d R - GM	Ø d1 R - GM	A mm	B mm
19022002	1 1/2"	1 1/4"	440	640
19022102	2"	1 1/2"	440	640

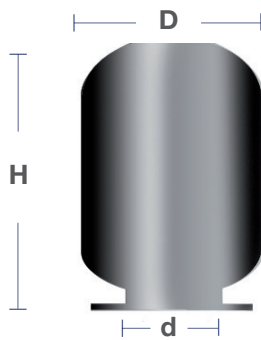
## Galvanized bedplates



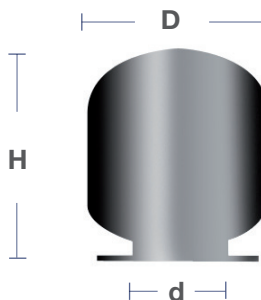
## Supports (galvanized)

Code	Model
19000001	SUPPORT-0
19000101	SUPPORT-1B
19011002	SQUARE SUPPORT

## Bladders AMR / AMR - INOX



Code	Ref.	Model	D (mm)	H (mm)	d (mm)
66700841	1539	5 - 8 AMR/E	150	190	50
66700806	1546	15 - 20 - 24 AMR-E	210	250	84
66700808	1206	24 AMR-E-E	180	310	87
66700843	200x335	35 AMR	200	335	84
66700854	200x505	50 AMR - P/S	200	505	84
66700809	1359	80 AMR-P/S	250	550	87
66700816	1358	100 AMR-P/S	250	680	87



## Bladders HMR

Code	Ref.	Model	D (mm)	H (mm)	d (mm)
66700804	1539 N	5 HMR - E	150	190	50
66700858	25 NBR	15-24 HMR - E	180	310	87

# ACCESSORIES AND SPARE PARTS

For a better identification, contact factory



## Bladders

Code	Ref.	Model	D (mm)	H (mm)	d (mm)
66700817	1535	100 AMR - P - A	250	680	87
66700818	1438	150 - 200 AMR - B90 (fuelle)	400	800	84
66700122	1404	300 AMR - B160 (fuelle)	400	810	120
66700213	1547	500/700 AMR - B160 (fuelle)	520	1372	127

## Bladders AMR-PLUS / AMR-DUO

Code	Ref.	Model	D (mm)	H (mm)	d (mm)
66700012	993	100 AMR-16 / 80-100 AMR - PLUS	300	600	120
66700202	1361	150 AMR - PLUS / DUO	306	905	120
66700203	983	220 AMR - PLUS / DUO	306	1100	120
66700206	982	350 - 500 AMR - PLUS / DUO	336	1720	120
66700209	1052	700 - 900 AMR - PLUS / DUO	425	1900	120
66700216	1889	1000 AMR - PLUS / DUO	420	2305	120
66700212	600x1900	1000 - 1400 AMR	600	1900	240

REMARK: 500 AMR-20 is assembled with 66700209 bladder.



## Bladders AHN

Code	Ref.	Model	D (mm)	H (mm)	d (mm)
66700854	1435	25 AHN	230	450	84
66700809	1359	50 AHN	250	550	87
66700206	982	100 - 200 AHN; 350 AHN-P	336	1720	135
66700203	983	150 - 220 AHN	306	1100	120
66700209	1052	350 AHN; 500 - 700 AHN-P	425	1900	120

REMARK: For other volumes, contact factory.



## Valves

Code	Model	Capacity (Lts)
69150505	AMR	5 - 1000
69150502	AHN / AMR > 16 Bar	100 - 1400
69150503	AMR Special	80 - 100
69150504	AMR S. Steel	20 - 100



# ACCESSORIES AND SPARE PARTS

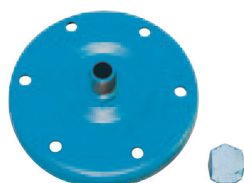
For a better identification, contact factory

## Bottom cap for water inlet 8 - 10 - 16 Bar



Code	Model	Capacity (Lts)	Diámetro Ø (mm)	Pressure Max. (Bar)	Water connection
96700101 96700201	AMR-E / AMR / HMR-E	5 - 8	100	10	3/4" 1"
96700102 96700202	AMR-E / HMR-E	24	150	8	3/4" 1"
96700204	AMR / AMR-S / AMR-P	15 - 100	150	10	1"
96700204	AMR / AMR-P	15 - 50	150	16	1"
96700806	AMR-P-A	100	150	10	1 1/4"
96700806	AMR-B90	150-200	150	10	1 1/4"
96700803	AMR-B160	300	235	10	1 1/4"
96700808	AMR-B160	500-700	235	8-10	1 1/2"
96700402	AMR Inox	20-24-50-100	150	10	1"
96700214	AMR-P-A / AMR-B90 (AISI 304)	100-150-200	150	10	1 1/4"
96700213	AMR-B160 (AISI 304)	300	235	10	1 1/4"
96700212	AMR-B160 (AISI 304)	500-700	235	8-10	1 1/2"

## Upper cap for accessories connection



Code	Model	Capacity (Lts)	Diámetro Ø (mm)	Pressure Max. (Bar)	Water connection
96700601	AMR (Cincada)	150-900 80 - 100	235	10 16	1"
96700602	AMR - PLUS (Pintada)	80-1000	235	10	1"
96700603	AMR (Pintada)	150 - 700	230	16-20	1"
96700604	AMR (Pintada)	1000 - 1400	370	10-16-20	1"
96700426	AMR - DUO	150 - 1000	235	10	1 1/2"

REMARK: Gasket and plug included, except 96700426.

## Upper couplings



Code	Model	Capacity (Lts)	Pressure Max. (Bar)	Water connection
91100501	AMR-P-A / AMRB90 / AMRB160	100-700	8-10	3/4"
91100502	AMR-P-A / AMRB90 / AMRB160 INOXIDABLE	100-700	8-10	3/4"

REMARK: Tube, nut and cap are included.

## Water inlet couplings 10 - 16 - 20 Bar



Code	Model	Capacity (Lts)	Pressure Max. (Bar)	Water connection
91100503	AHN / AMR / AMR-H / AMR-PLUS	80-1000	10-16-20	1 1/2"
91100504	AMR / AMR-H (AISI 316)	1000-1400	10-16-20	2"
91100505	AHN / AMR / AMR-H / AMR-PLUS (AISI 316)	80-1000	10-16-20	1 1/2"
91100506	AMR-DUO (AISI-316)	150-1000	10	1 1/2"

REMARK: Nut included.